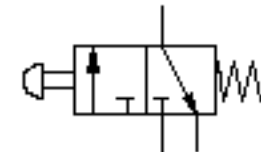
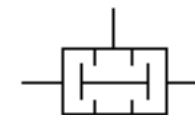
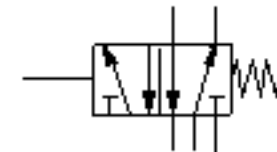




SIMBOL & MEKANISME KOMPONEN PNEUMATIK (1)

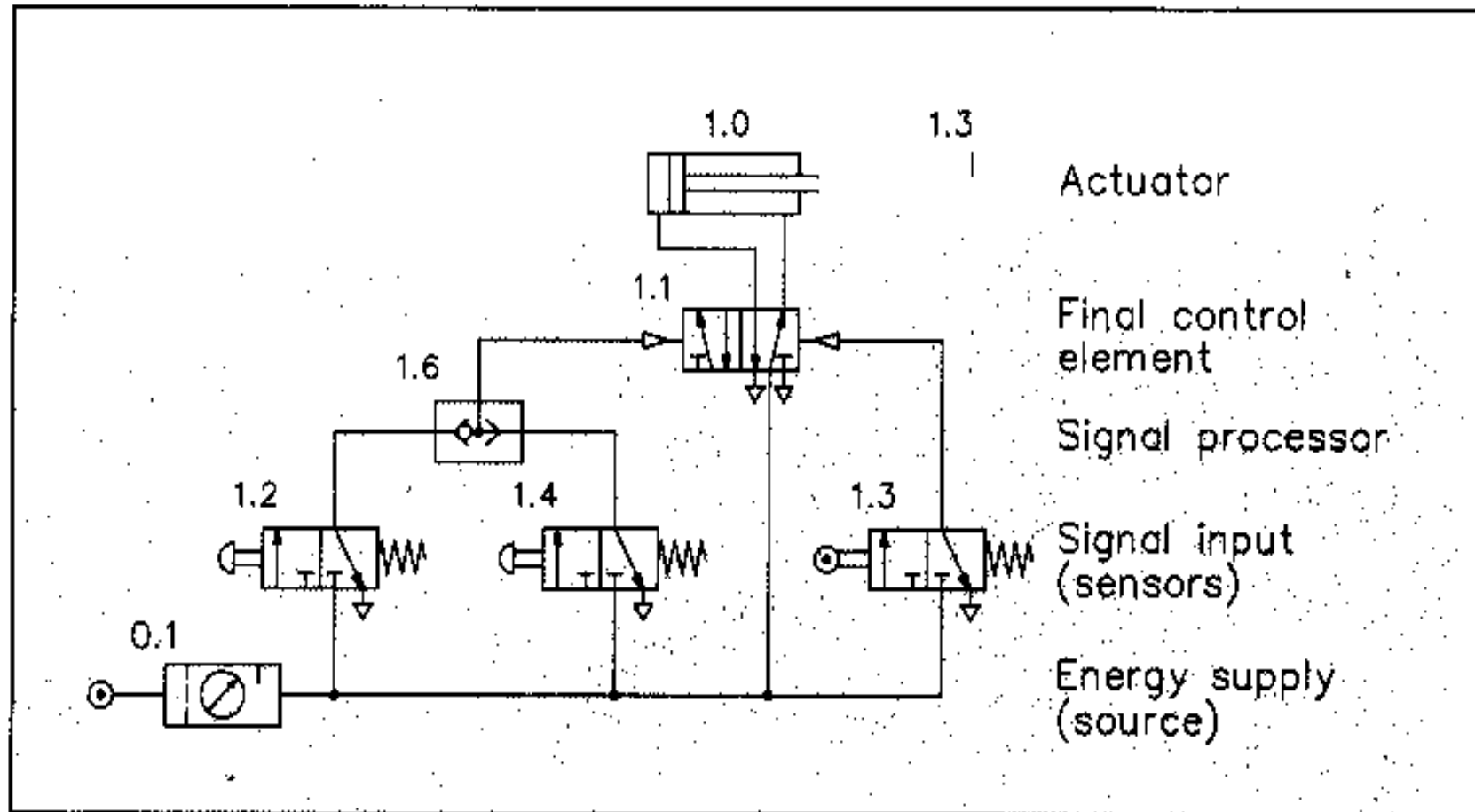
PURNAWAN

SIMBOL & MEKANISME KOMPONEN



SIMBOL & MEKANISME KOMPONEN

Circuit diagram and pneumatic elements



Energy source

Energieversorgung

Verdichter

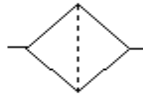


Druckspeicher mit T-Verbindung

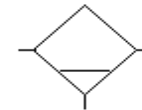


Aufbereitung

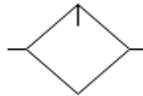
Filter



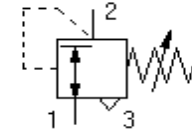
Wasserabscheider



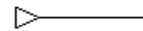
Öler



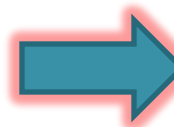
Druckregler



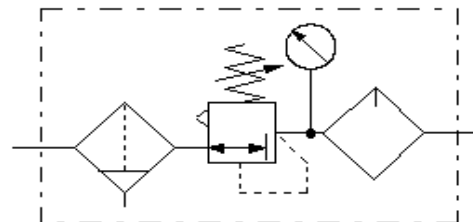
Druckquelle



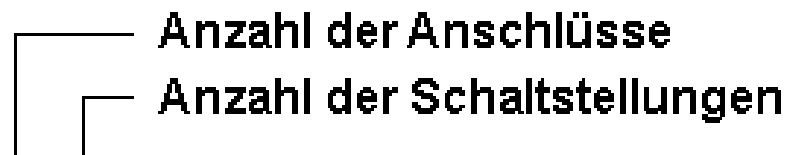
Wartungseinheit



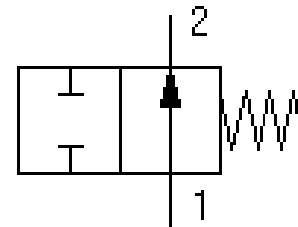
Air Service Unit



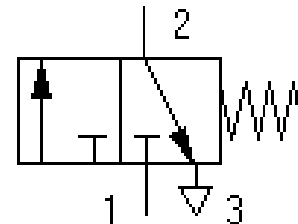
Sensor (Valve)



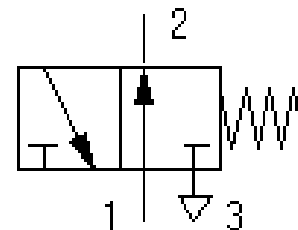
2 / 2 Wegeventil
Ruhestellung "offen"



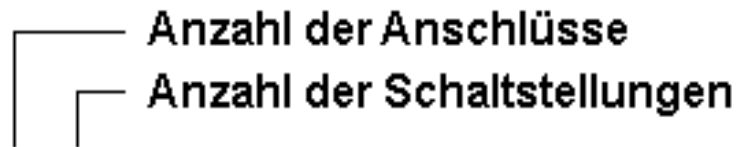
3 / 2 Wegeventil
Ruhestellung "gesperrt"



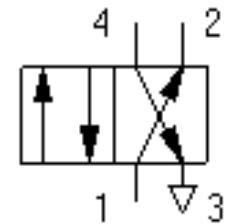
3 / 2 Wegeventil
Ruhestellung "offen"



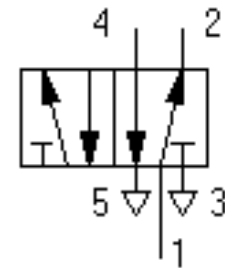
Sensor (Valve)



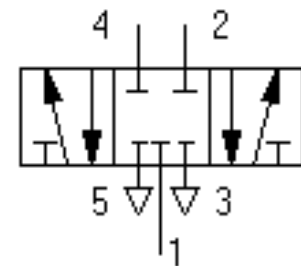
4 / 2 Wegeventil



5 / 2 Wegeventil



5 / 3 Wegeventil
Sperrmittelstellung



Sensor (Actuation & Return Method)

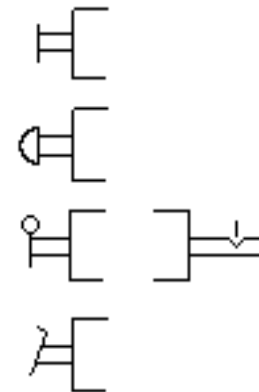
■ Muskelkraftbetätigt

Allgemein

Druckknopf

Hebel mit Raste

Pedal



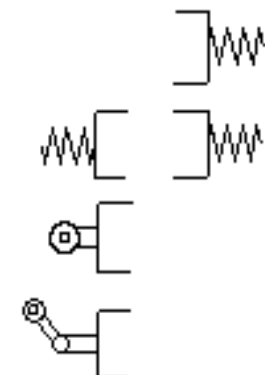
■ Mechanisch betätigt

Federrückgestellt

Federzentriert

Rolle

Rolle mit Leerrücklauf



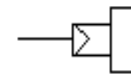
Sensor (Actuation & Return Method)

■ Pneumatisch

Direkte pneumatische Betätigung



Indirekte pneumatische Betätigung

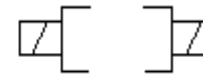


■ Elektrisch

mit einem Magneten

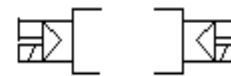


mit beidseitigen Magneten

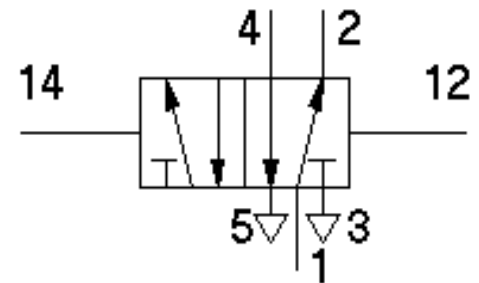
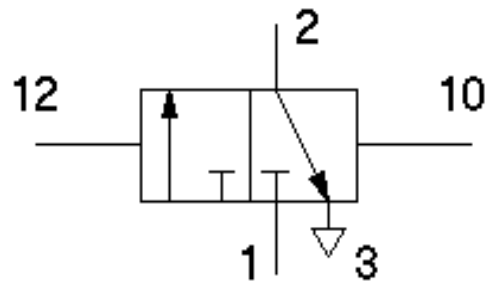
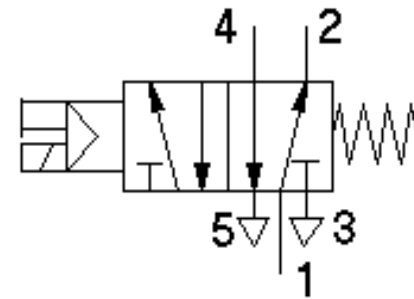
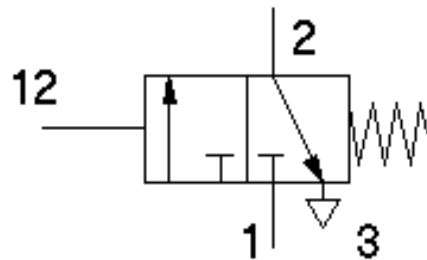


■ Kombiniert

beidseitige Magneten mit Vorsteuerventil
und Handhilfsbetätigung

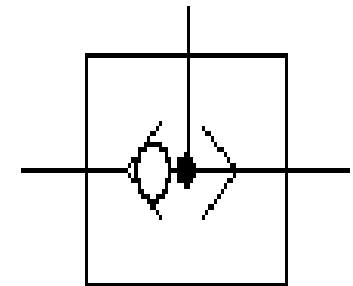


Sensor (Combine Symbol)

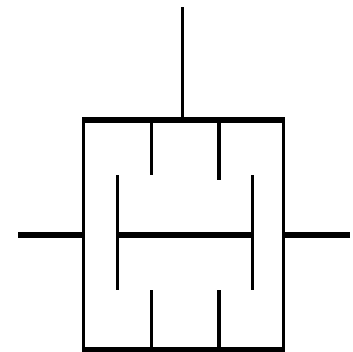


Processor

Wechselventil, ODER-Funktion

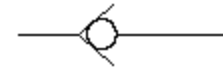


Zweidruckventil, UND-Funktion



Auxiliaries Valve

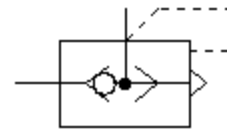
Rückschlagventil



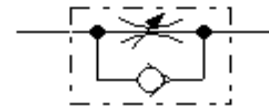
Rückschlagventil, federbelastet



Schnellentlüftungsventil



Drosselrückschlagventil

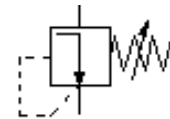


Drosselventil, einstellbar

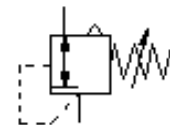


Combined Valve

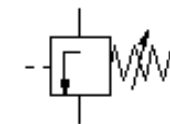
Einstellbares Druckregelventil
ohne Abflussöffnung



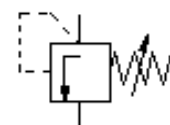
Einstellbares Druckregelventil
mit Abflussöffnung



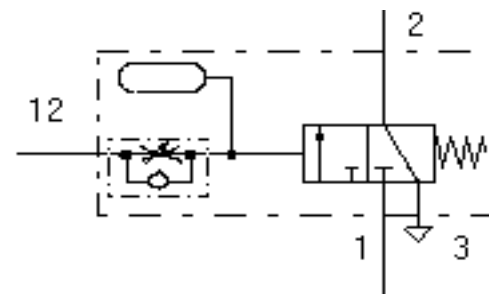
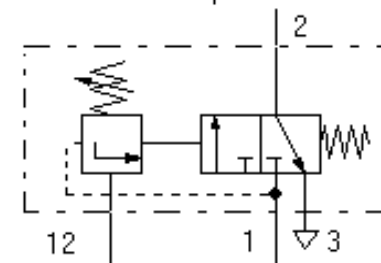
Druckschaltventil
äußere Zuleitung



Druckschaltventil
mit direkter Zuleitung

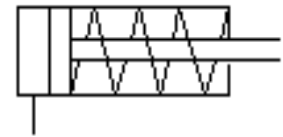


Druckschaltventil
Kombination

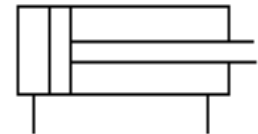


Linear Actuator

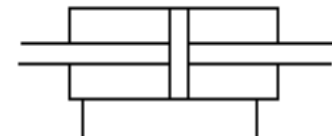
Einfachwirkender Zylinder



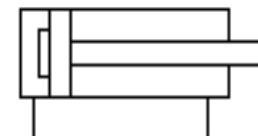
Doppeltwirkender Zylinder



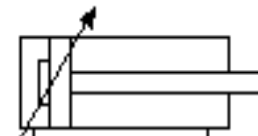
Doppeltwirkender Zylinder
mit beidseitiger Kolbenstange



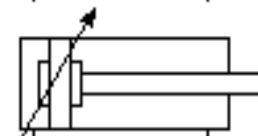
Doppeltwirkender Zylinder mit einseitiger
Dämpfung, nicht einstellbar



Doppeltwirkender Zylinder mit einseitiger
Dämpfung, einstellbar

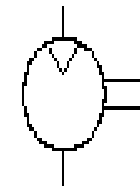


Doppeltwirkender Zylinder mit beidseitiger
Dämpfung, einstellbar

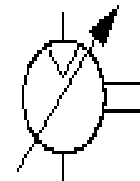


Rotary Actuator

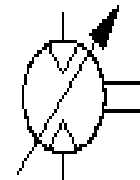
Pneumatik-Konstantmotor mit
einer Strömungsrichtung



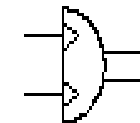
Pneumatikmotor, verstellbar, mit
einer Strömungsrichtung



Pneumatikmotor, verstellbar, mit
zwei Strömungsrichtungen

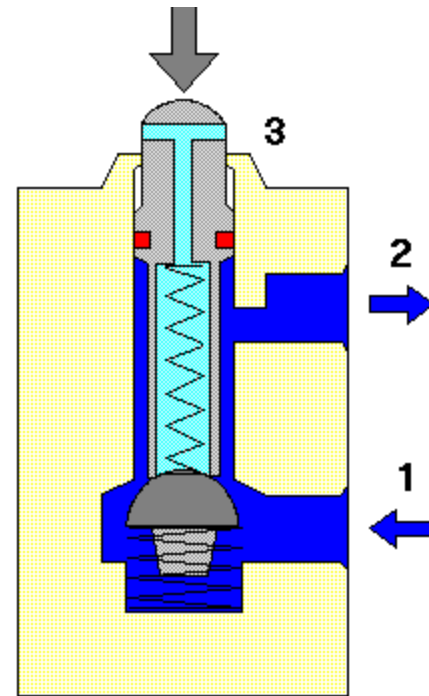
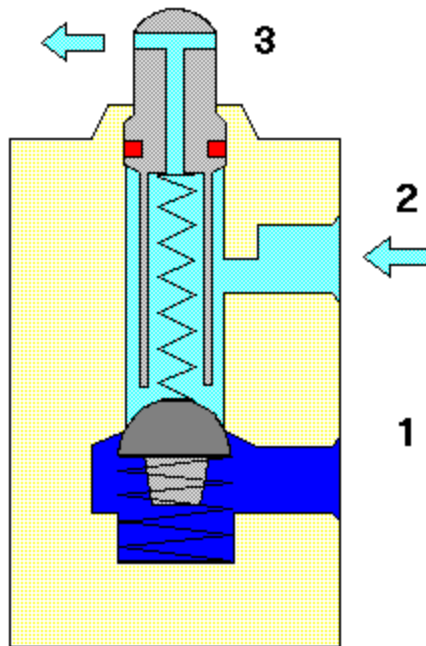
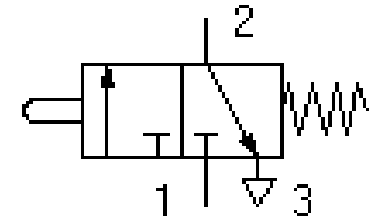


Schwenkmotor

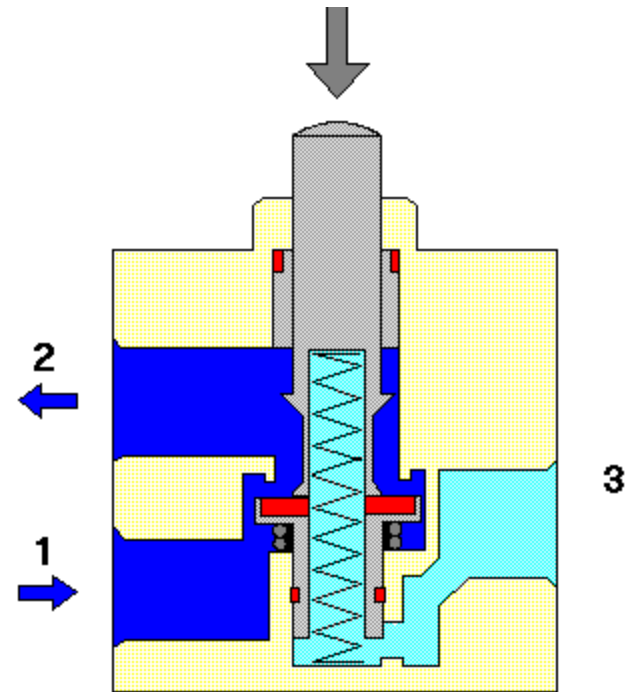
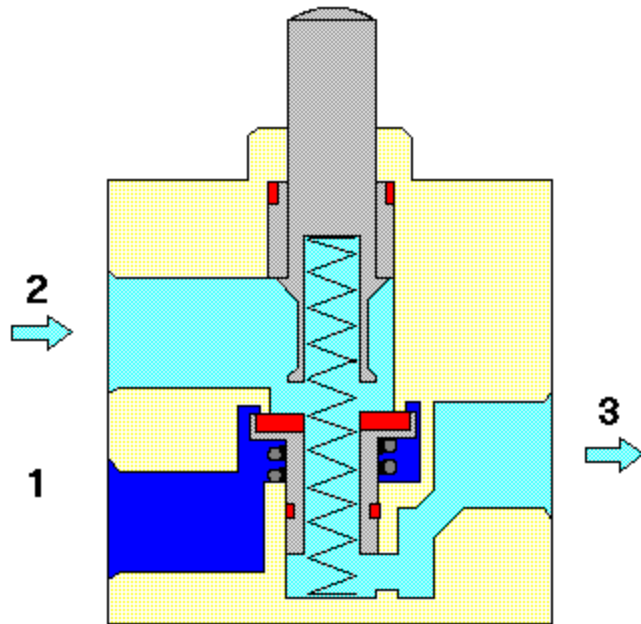
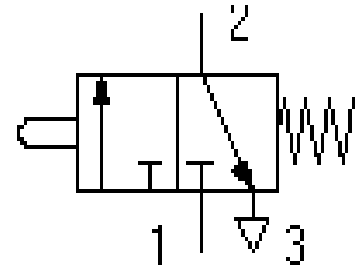


Component Mechanism (Valve)

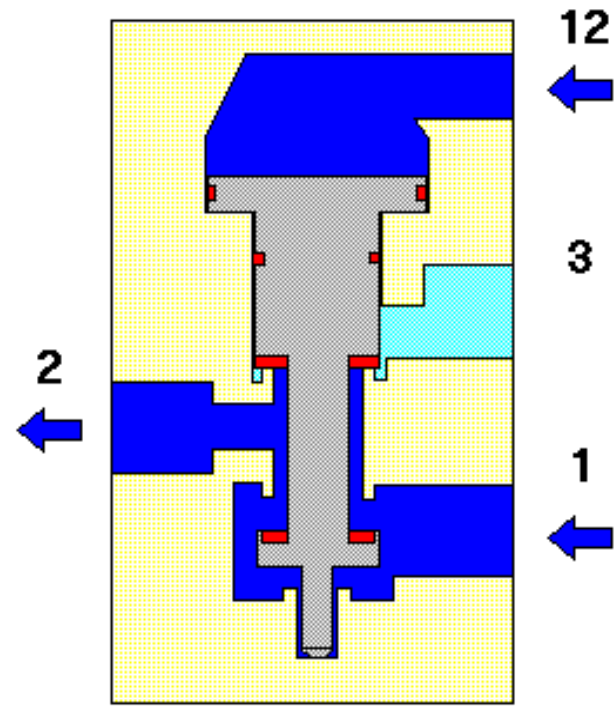
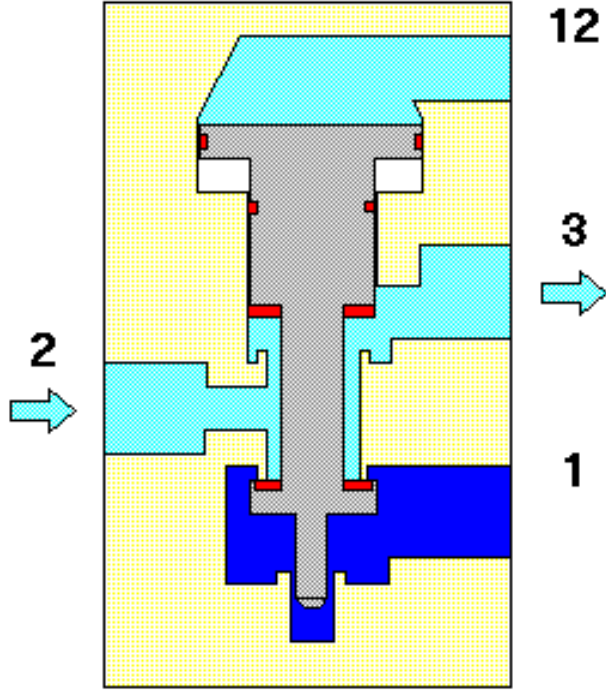
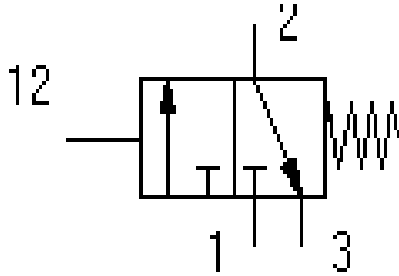
DCV 3/2 NC G-SR



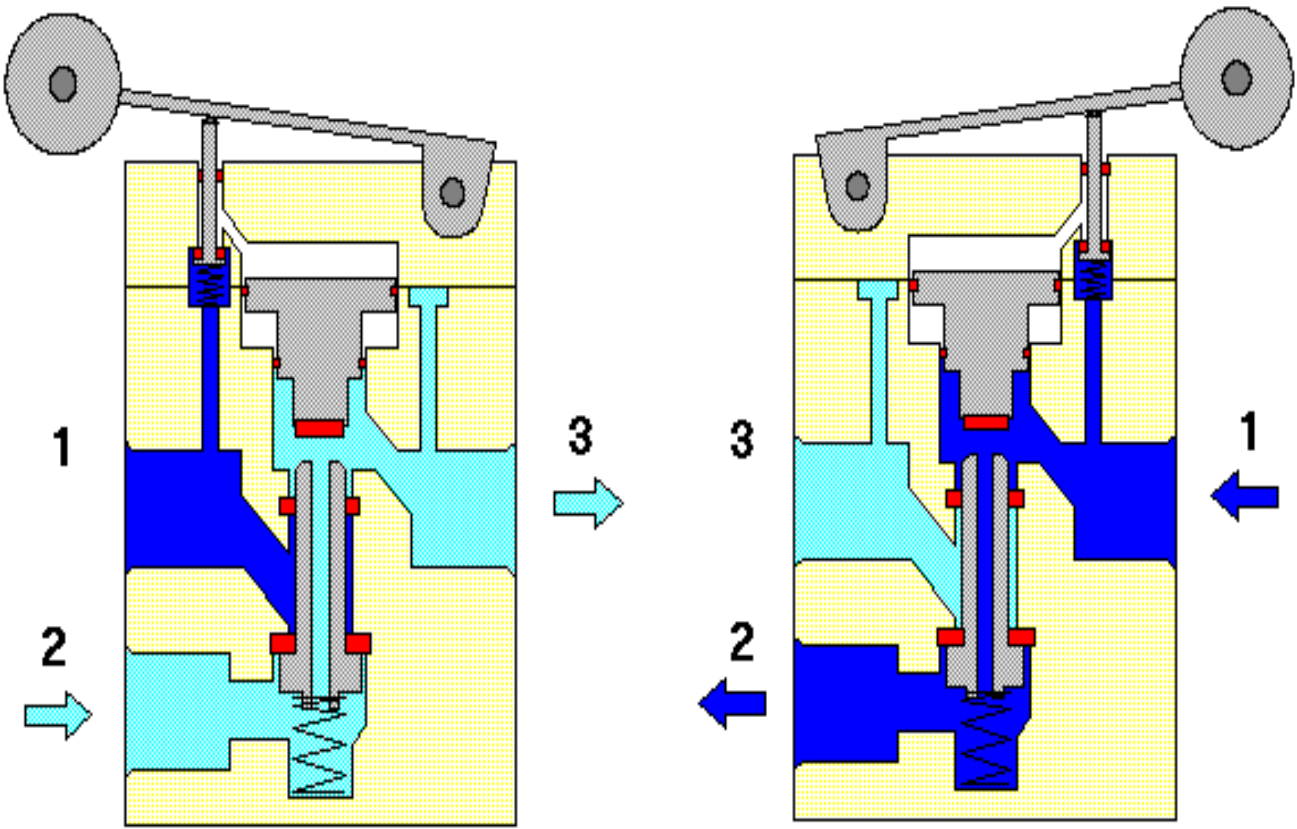
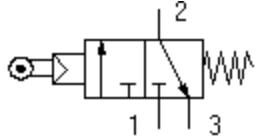
DCV 3/2 NC G-SR



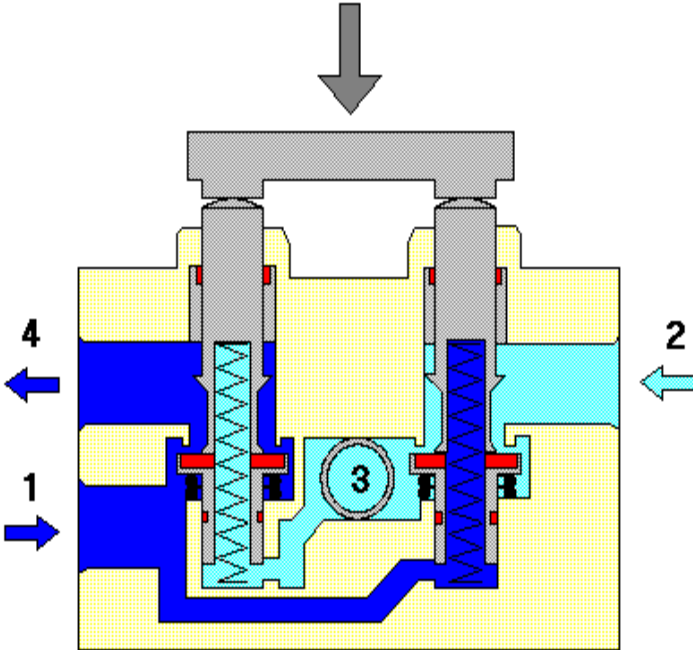
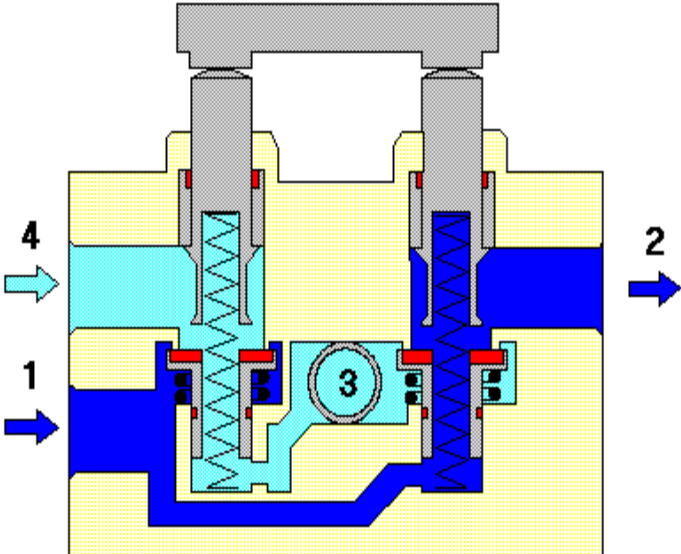
DCV 3/2 NC P-SR



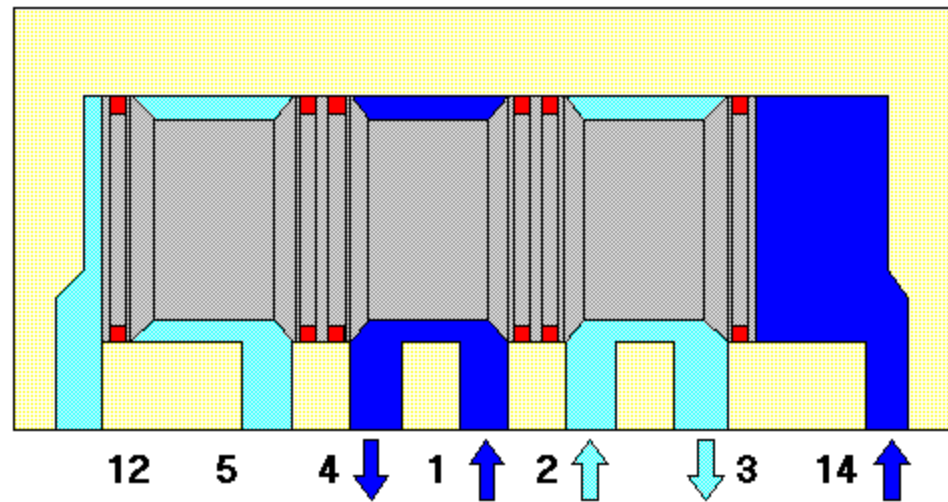
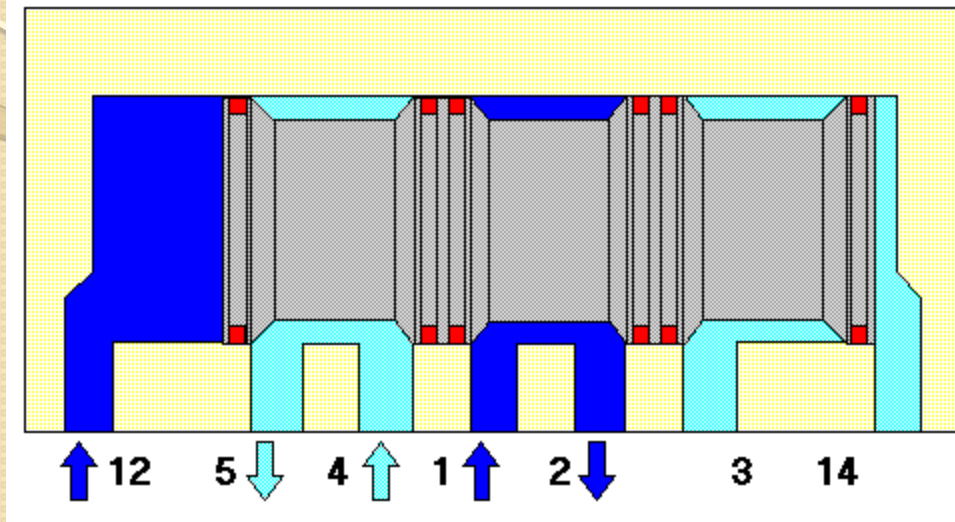
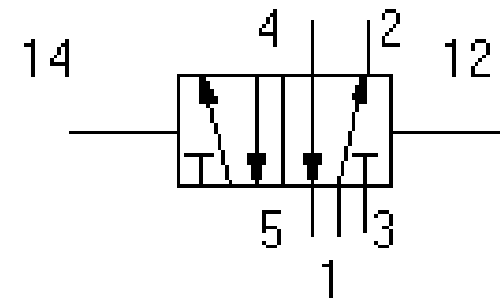
DCV 3/2 NC R/IP-SR



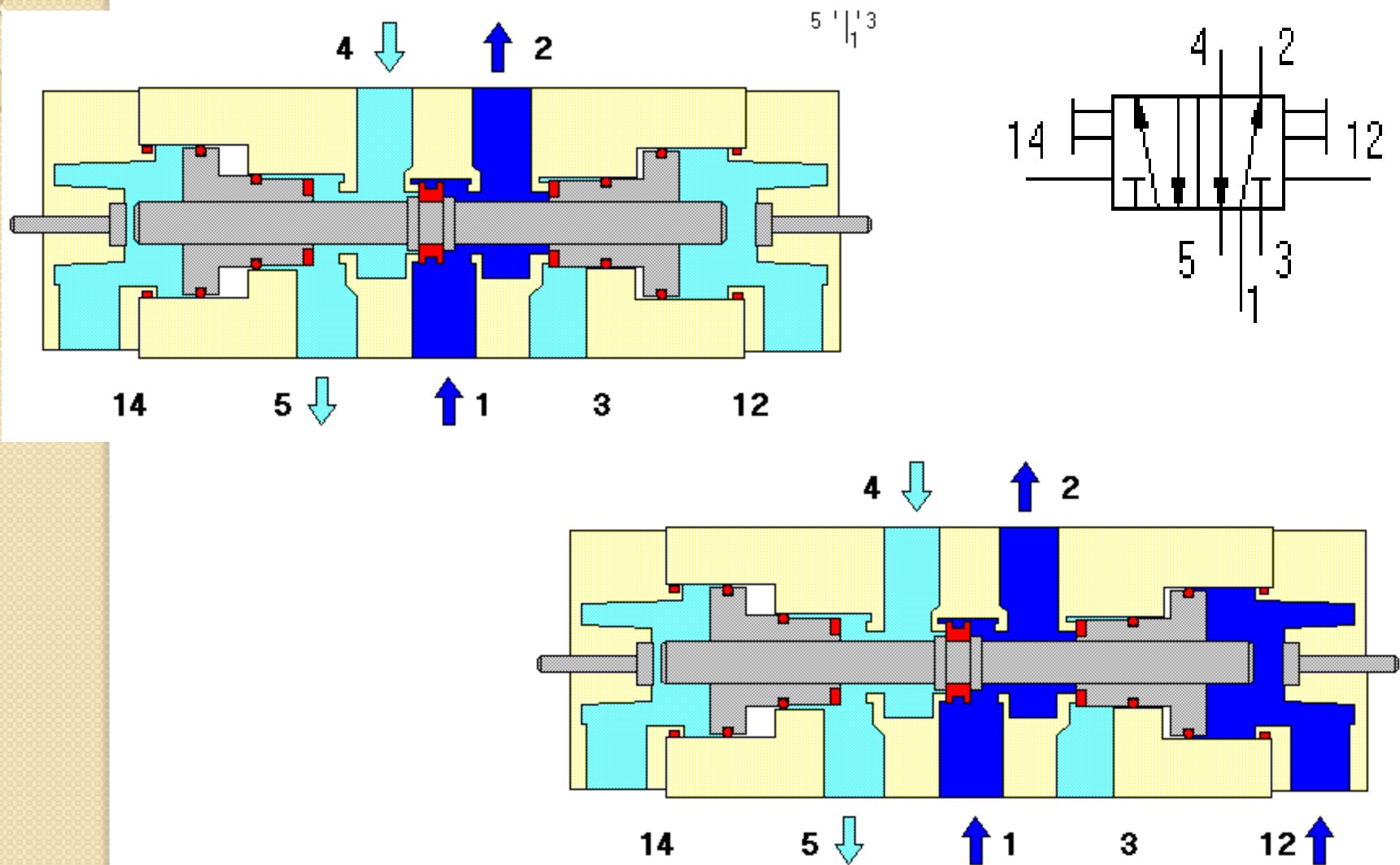
DCV 4/2 DG-SR



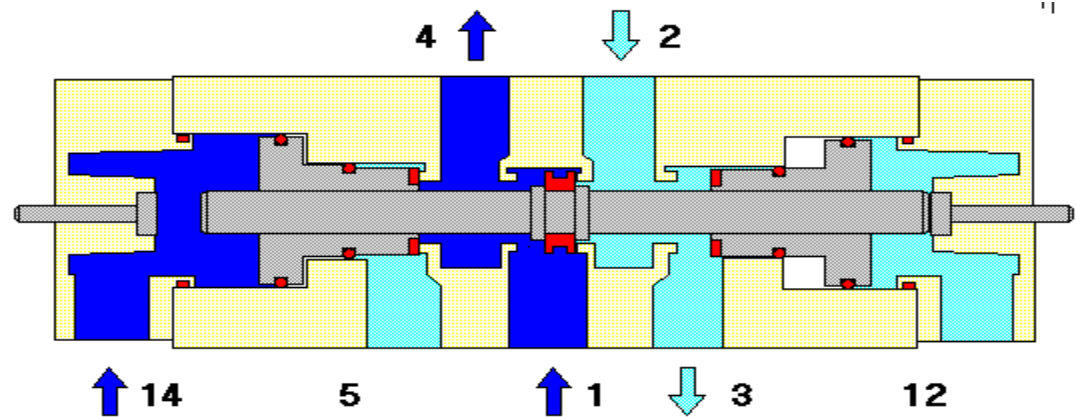
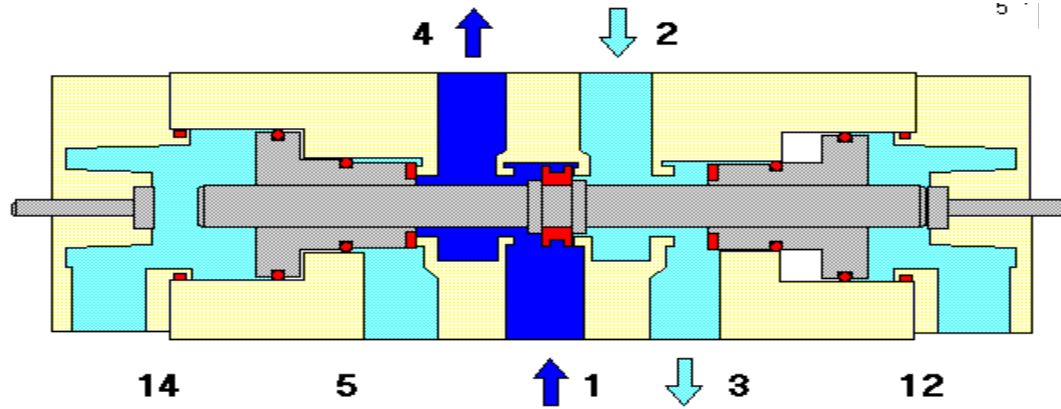
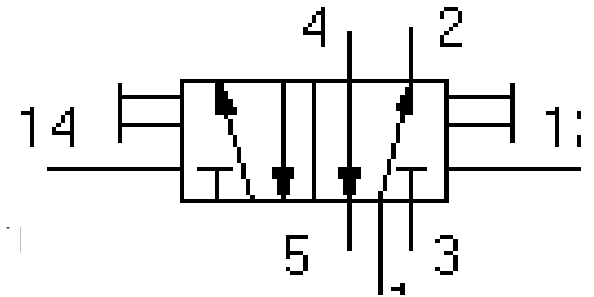
DCV 5/2 DP



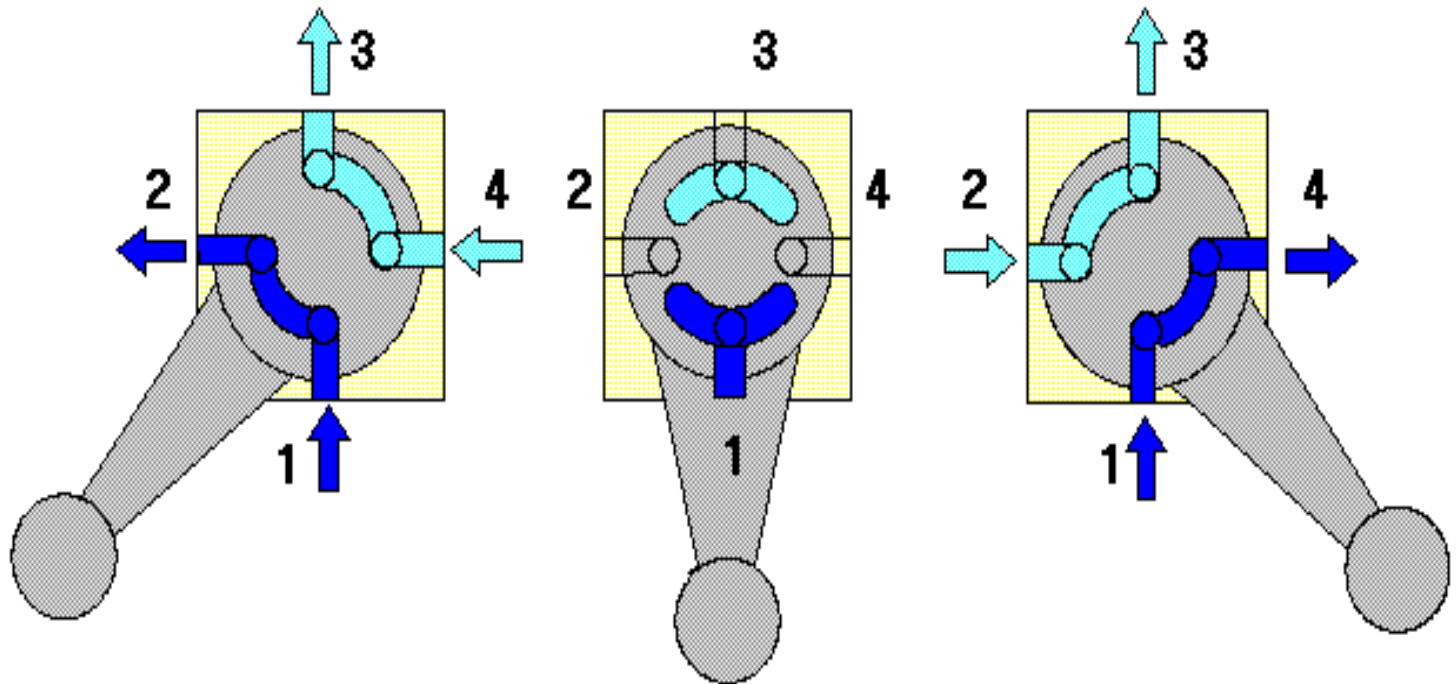
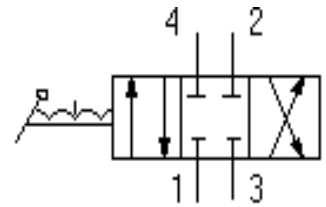
DCV 5/2 DP/DM



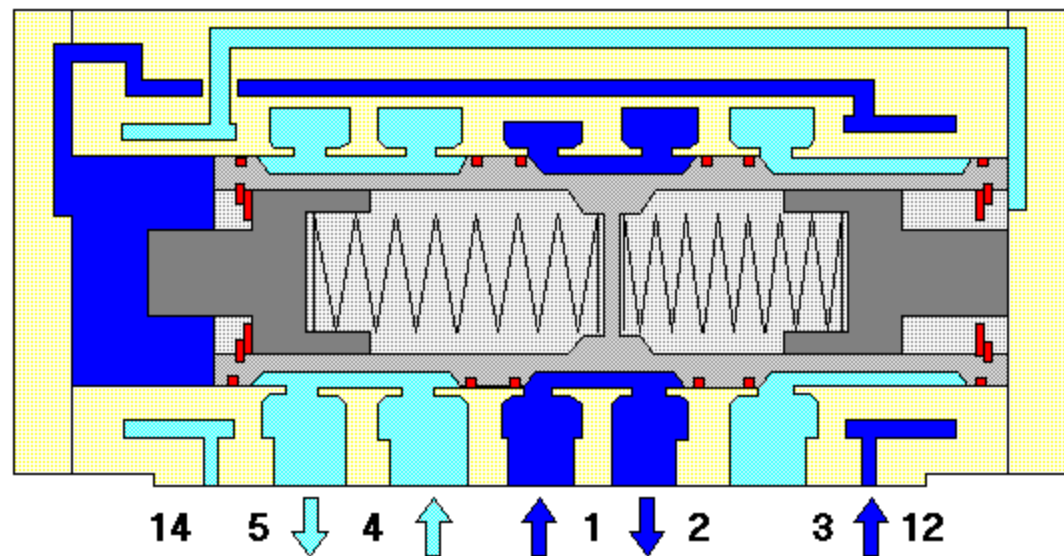
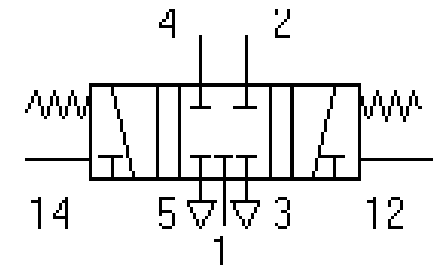
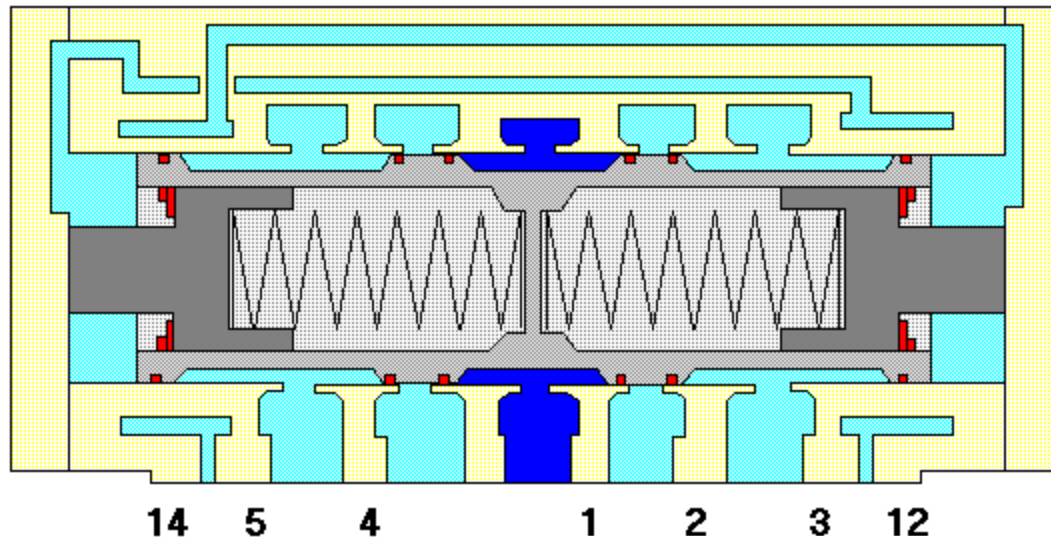
DCV 5/2 DP/DM



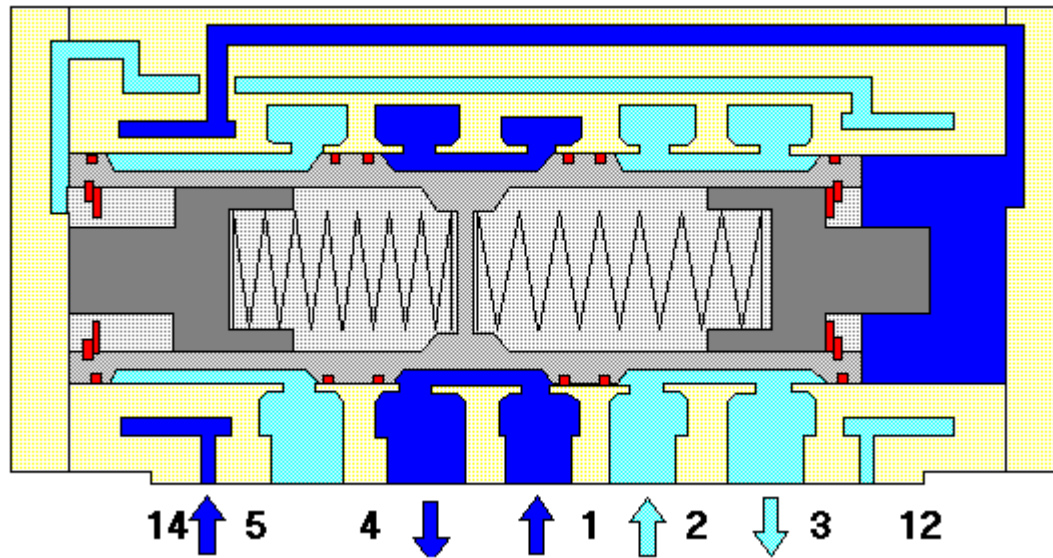
DCV 4/3 LD



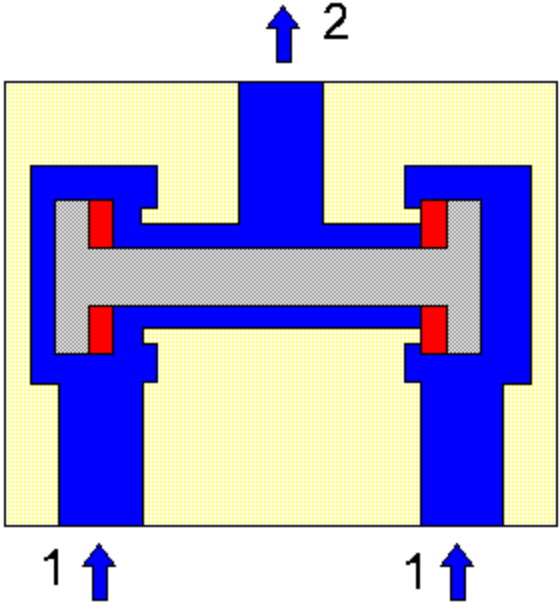
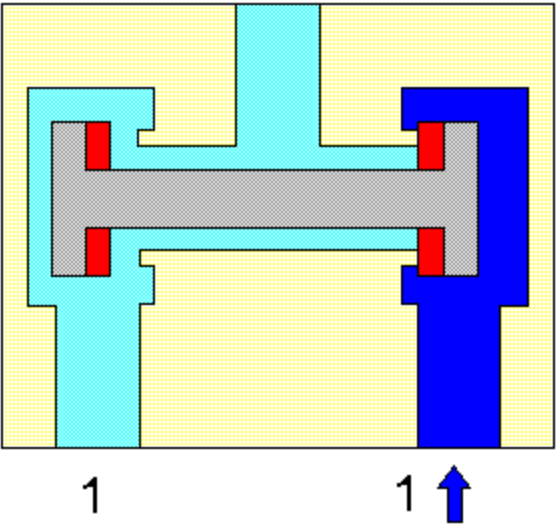
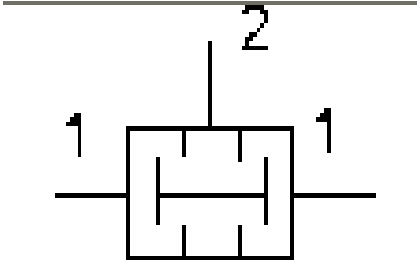
DCV 5/3 DP/DS



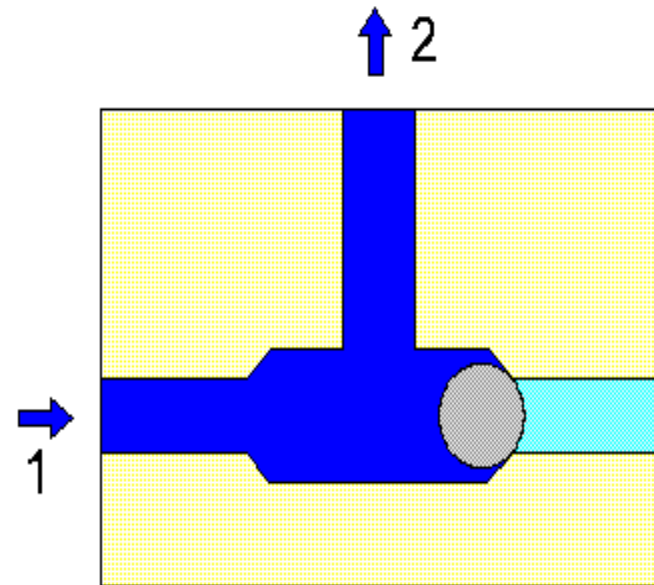
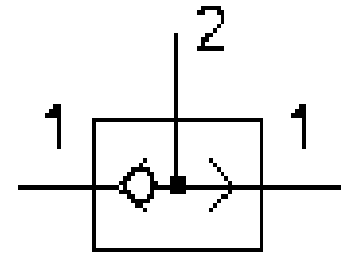
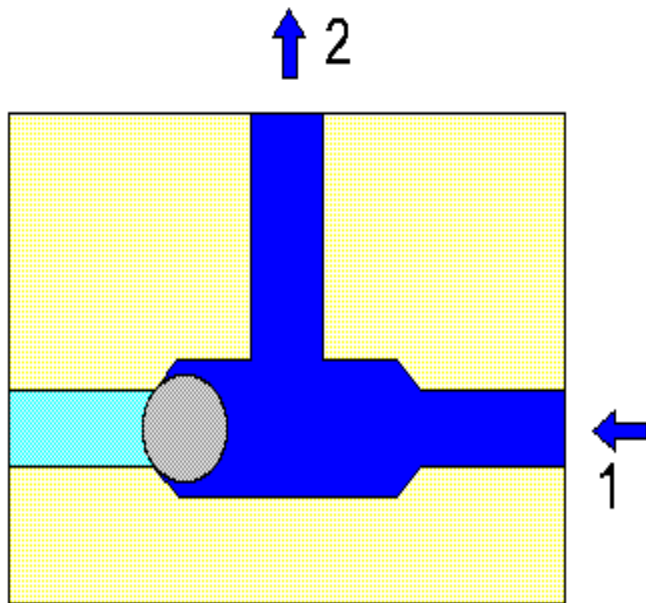
DCV 5/3 DP/DS



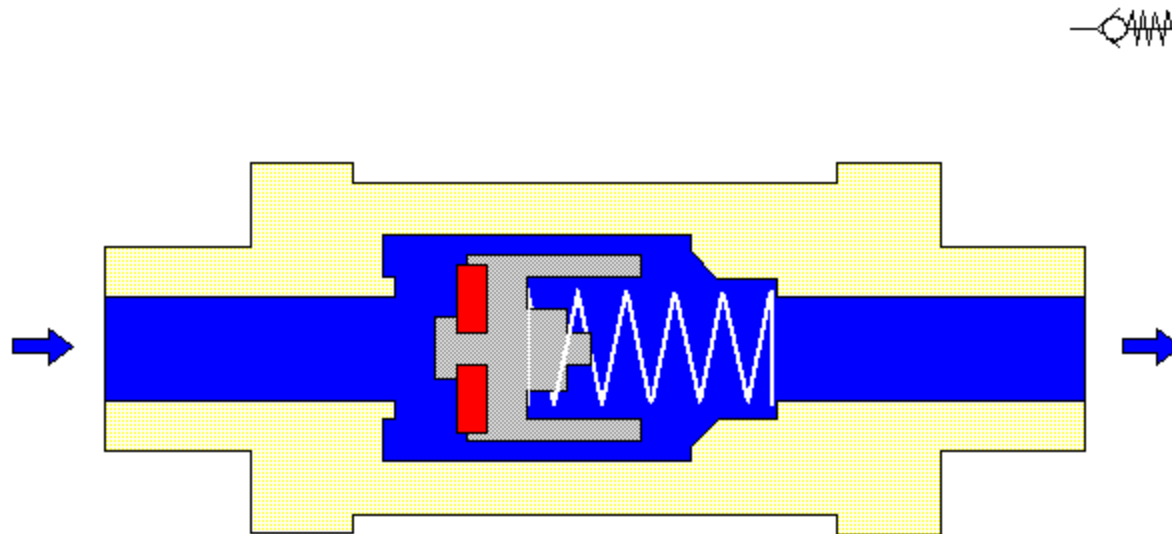
AND Valve



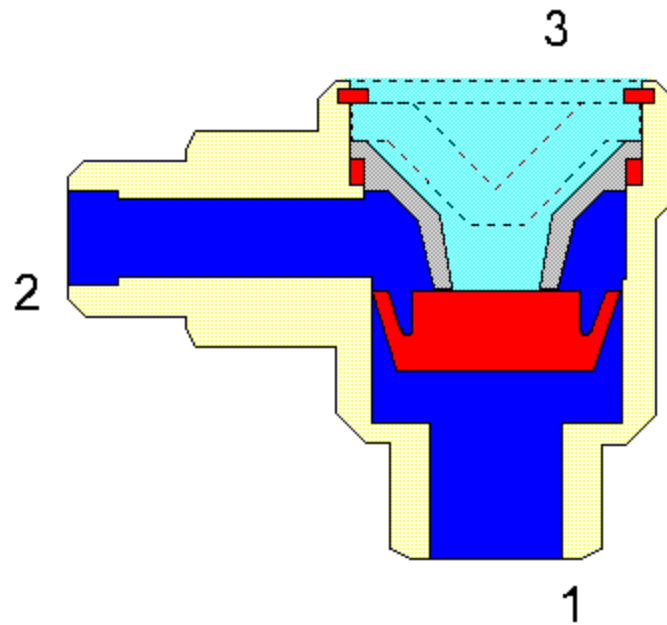
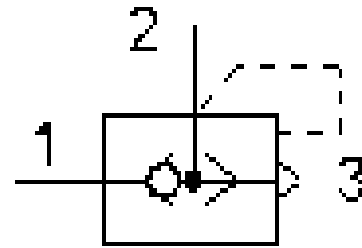
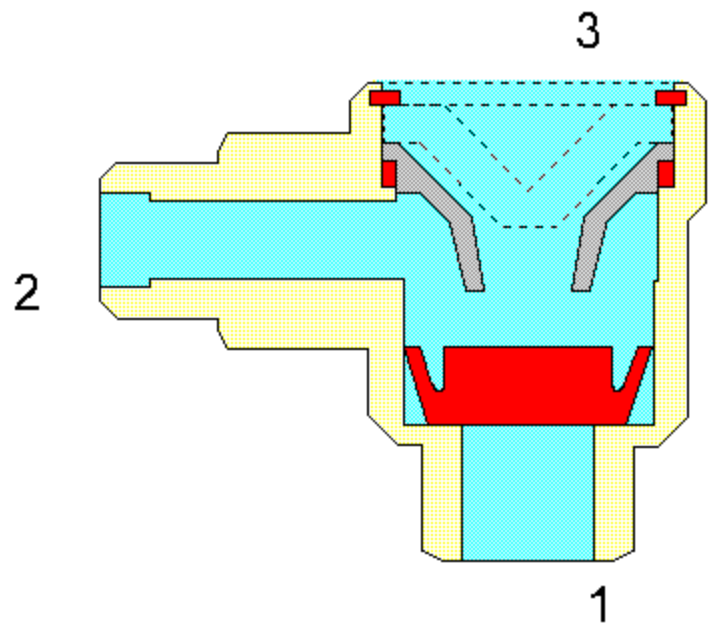
OR Valve



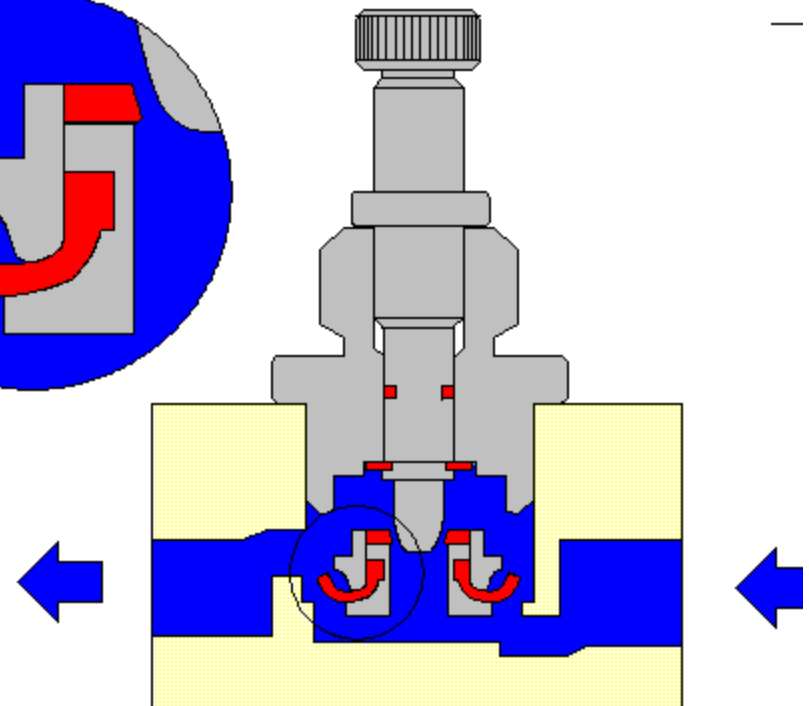
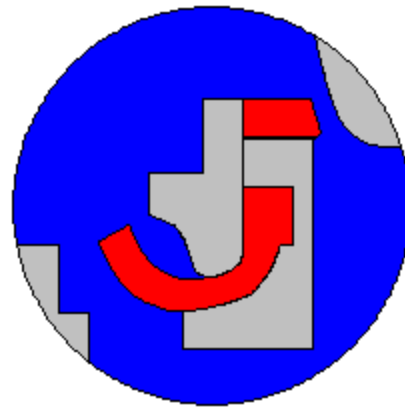
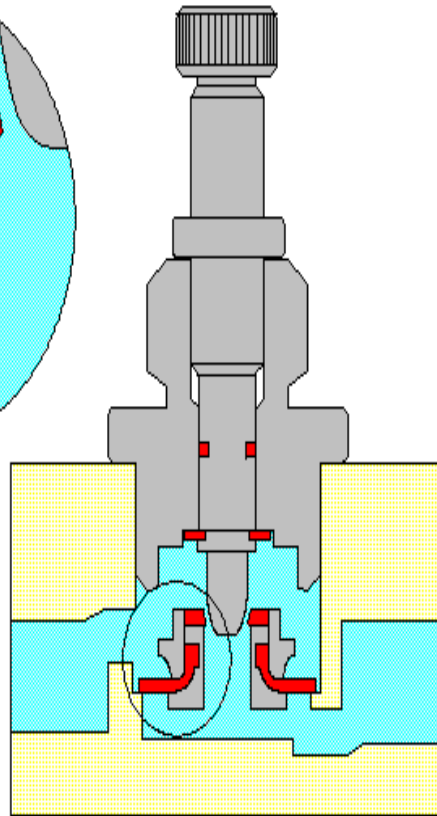
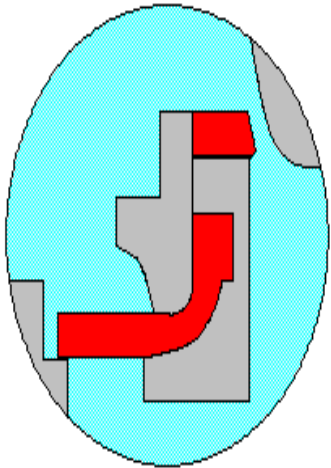
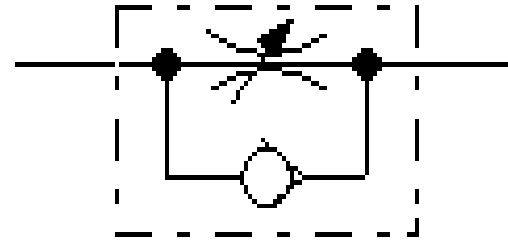
Check Valve



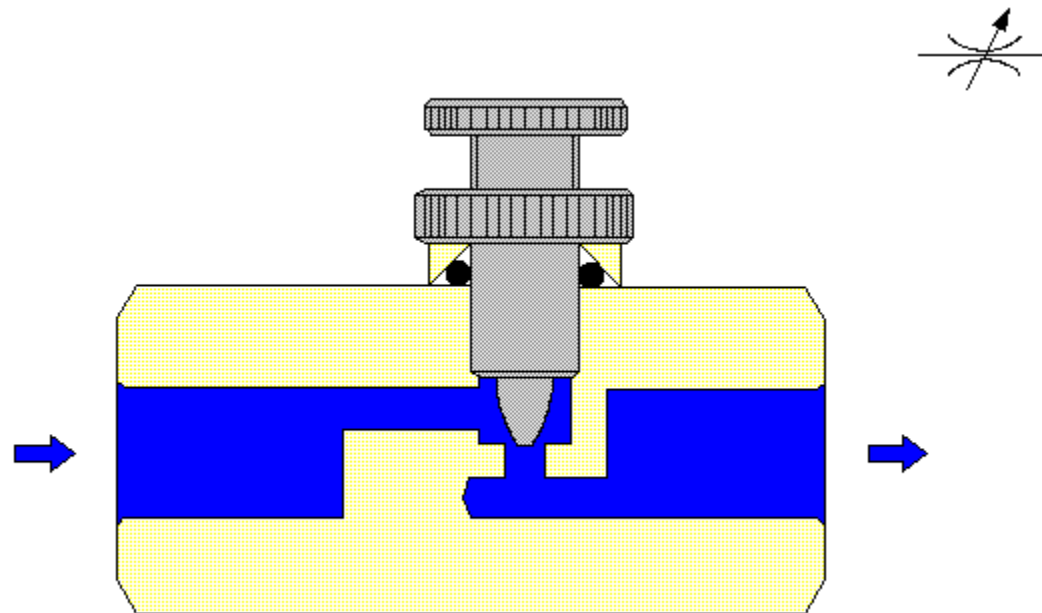
Quick Exhaust Valve



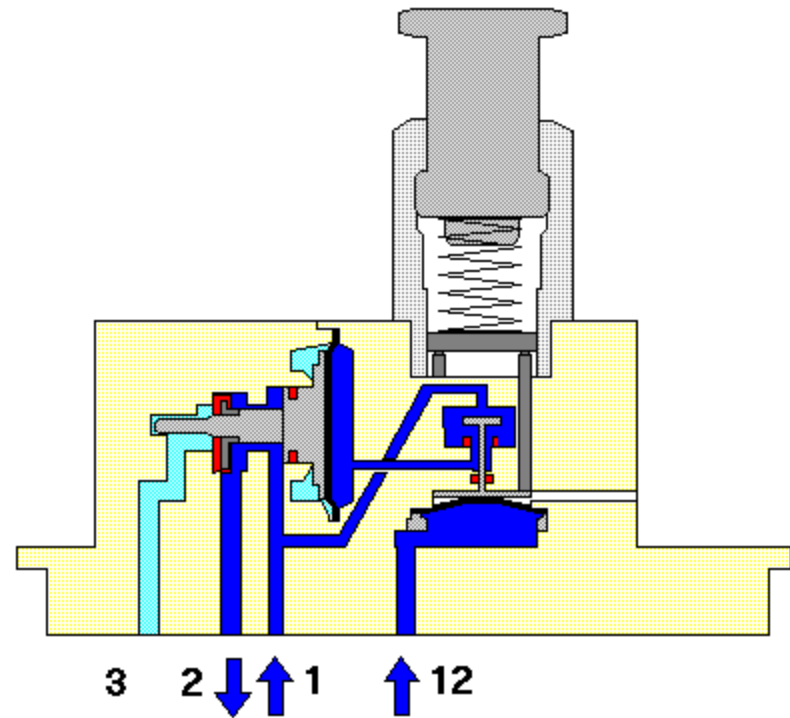
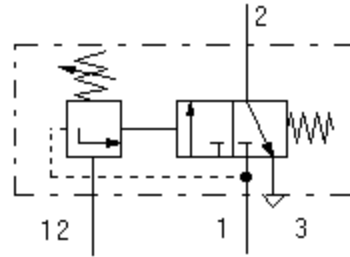
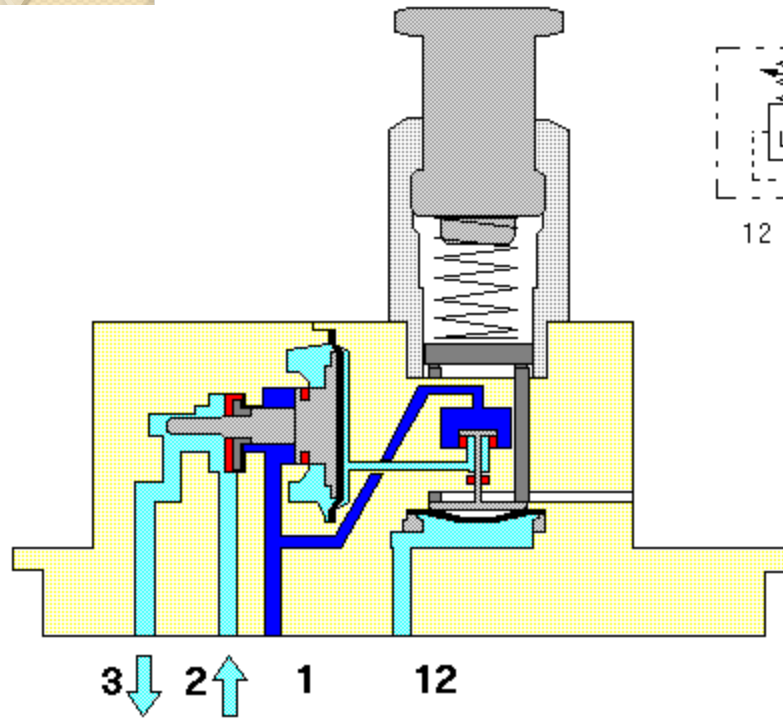
One Way Flow Control Valve



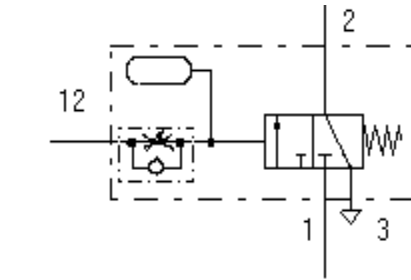
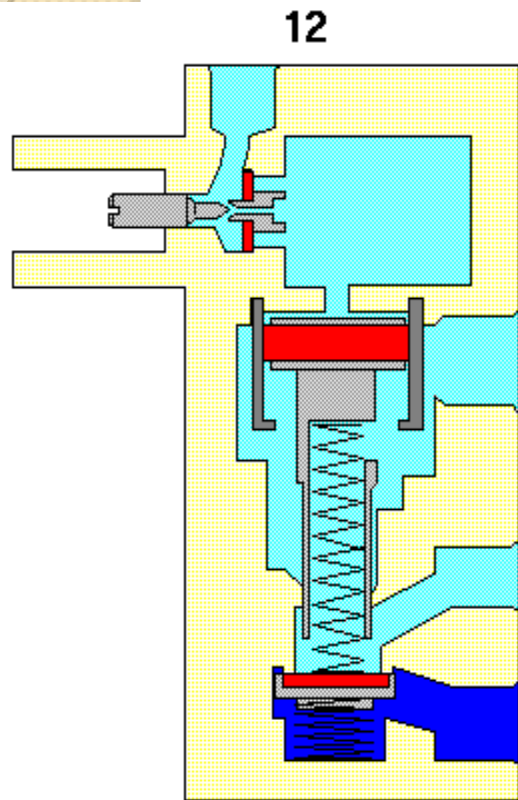
Adjustable Flow Control Valve



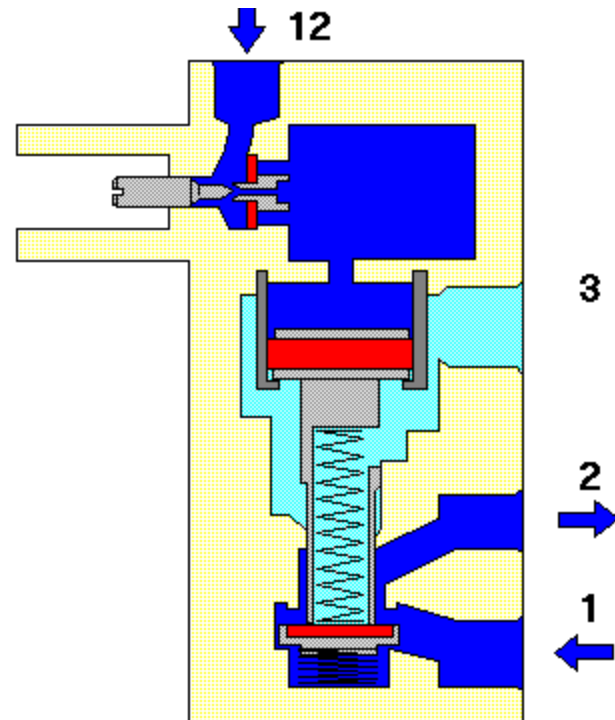
Pressure Regulating Valve



Delay Time Valve



1



3



1